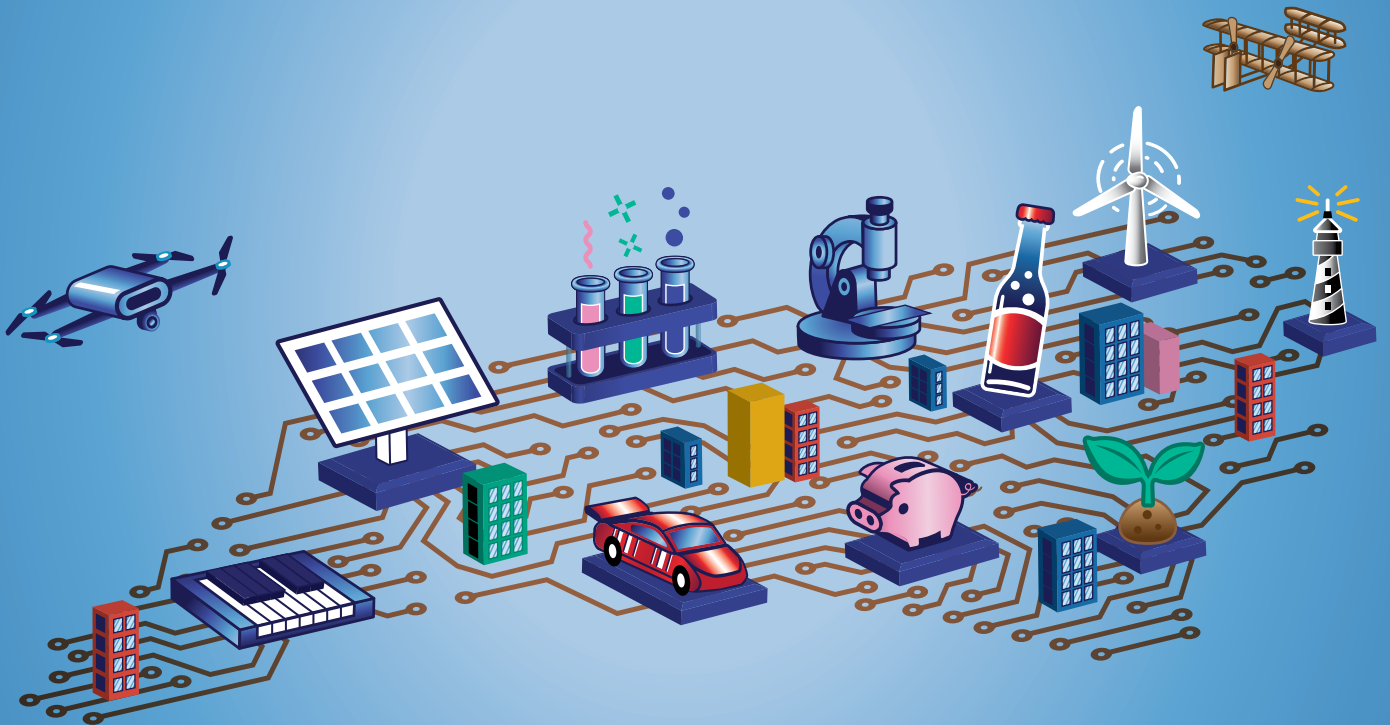




STATE OF INNOVATION



2024

IMPACT REPORT

FESTIVAL SUMMARY

NCSciFest is the first statewide celebration of its kind in the nation. This April, our theme **State of Innovation** acknowledged both the history of advancements in North Carolina as well as our continued innovations and progress in STEM all around the state.

Community-based events are hosted by museums, science centers, colleges, universities, businesses, parks, libraries, and hundreds of K-12 schools around North Carolina. Founded in 2010 by Morehead Planetarium and Science Center, NCSciFest has served more than 3.5 milion participants of all ages from all 100 counties since its inception.

ADVISORY BOARD

CHRISTY L. SHAFFER, PH.D., Chair
Hatteras Venture Partners

BETSY BENNETT, PH.D.

CHRIS CARTER
Duke Energy

ALFRED G. CHILDERS, PH.D.
MagellanScience.org

MARILYN FOOTE-HUDSON
NC GlaxoSmithKline Foundation

ANN B. GOODNIGHT
SAS

JOHN HARDIN, PH.D.
NC Department of Commerce

DELISHA HINTON
Wolfspeed

HOWARD N. LEE
Howard N. Lee Institute

MATTHEW MEYER, PH.D.
NC Community Colleges

CHANCELLOR EMERITUS JAMES MOESER
UNC-Chapel Hill

LOUIS MUGLIA, M.D., PH.D.
Burroughs Wellcome Fund

THAN POWELL
Surescripts

STEPHANIE PRICE-DAVID
Gilead Sciences

CHANCELLOR TODD ROBERTS
NC School of Science and Mathematics

CHARLES A. SANDERS, M.D.
Retired Chairman & CEO, GlaxoSmithKline

G. EDWARD STORY, J.D.
RTI International

RICHARD SUPERFINE, PH.D.
UNC-Chapel Hill

DEB THOMAS, PH.D.
UNC-Charlotte

JULIA WHITE
NC Governor's Office

CHANCELLOR W. RANDOLPH WOODSON
NC State University

DENISE YOUNG, ED.D.
NC Museum of Natural Sciences

WAYNE ZUNIC, PH.D.
Biogen

CONTACT


Morehead Planetarium and Science Center

The University of North Carolina at Chapel Hill

 **Campus Box 3480**
Chapel Hill, NC 27599-3480

 **ncsciencefestival.org**

 **ncscifest@unc.edu**

 **919-843-8329**

2024 NCSciFEST TEAM

ERIK MACINTOSH
NCSciFest Manager
erikmac@unc.edu

TODD BOYETTE, PH.D.
NCSciFest Co-Founder
todd_boyette@unc.edu

CRYSTAL HARDEN, ED.D.
Director of Program and Access Initiatives
charden@unc.edu

STEPHANIE RIDLEY
Director of Advancement
stephanie.ridley@unc.edu

ADAM PHELPS
NCSciFest Sponsorships
arphelps@unc.edu

CHRIS KATELLA
Marketing and Communications Manager
ckatella@unc.edu

Dear NCSciFest Partners,

The 2024 North Carolina Science Festival was an incredible celebration thanks to you – our event hosts, teachers, scientists, sponsors, volunteers, and the thousands of North Carolinians who participated in events.

This year featured events for the public in more counties than ever before, highlighting how much science is woven into the fabric of our state’s culture. From major expos on college and university campuses to STEM workshops at libraries, there was something for everyone to enjoy this year.

Our school initiatives continue to grow in an attempt to meet the demand from educators across our state. We shipped 250 activity kits to elementary schools to host science nights for their school communities, and we paired 75 scientists with middle school teachers to facilitate classroom takeovers.

As we look towards our 15th year, we’re excited to continue to build the proud tradition of celebrating science as a state each April and continuing to expand access to science for all.

See you in 2025!

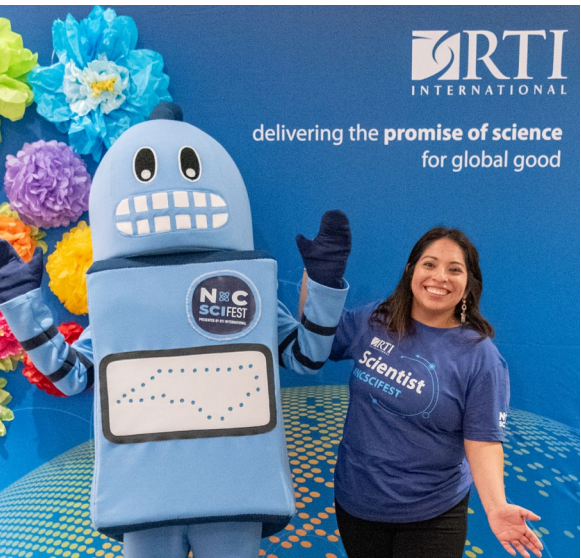
Best wishes and Science for All,
Todd & Erik

Todd Boyette

Todd Boyette,
NCSciFest Co-Founder

Erik MacIntosh

Erik MacIntosh,
NCSciFest Manager



“ **At RTI International, we believe when it comes to science, North Carolina is a state of innovation. We’re excited to see how our partnership with NCSciFest inspires the scientists of tomorrow.** ”

- Tim J. Gabel, RTI President and CEO

BY THE NUMBERS

196,861

TOTAL NCSCIFEST PARTICIPATION

1,047

TOTAL NCSCIFEST EVENTS

4,800

SOLAR ECLIPSE GLASSES DISTRIBUTED TO PARTNERS

262

DUKE ENERGY SCIENCE NIGHTS

2,808

TOTAL PARTICIPATING SCIENTISTS

502

TOTAL PUBLIC EVENTS IN NC

1

GRAND OPENING OF THE DUELING DINOSAURS EXHIBIT

7,570

MILES TRAVELED BY SCIENTISTS

1

STATEWIDE PARTIAL SOLAR ECLIPSE

78

COUNTIES WITH PUBLIC EVENTS



100

TOTAL COUNTIES REACHED IN NC

37

STATEWIDE STAR PARTY EVENTS ACROSS NC



STATE OF INNOVATION

Our 2024 Festival theme inspired our partners to celebrate the ways North Carolina leads the way with innovation: making technological breakthroughs, developing cutting-edge manufacturing techniques, and making new scientific discoveries.

"One big win: we overheard a child say, in regard to the experiments, 'I thought I knew how the eclipse worked, but it didn't make sense until now!'"
Samantha Martin, Asheboro Public Library

PARTIAL SOLAR ECLIPSE

This year's solar eclipse sparked curiosity and wonder as thousands of people across North Carolina joined together to witness the awe-inspiring sight of the moon passing in front of the sun.

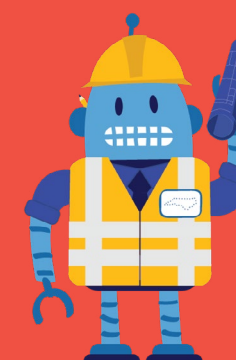
STATEWIDE STAR PARTY

Thanks to support from NC Space Grant, this year's Statewide Star Party provided opportunities for people to learn with hands-on sun and moon themed activities and safely observe the eclipse at 37 sites across our state.

SCIENCE EXPOS

The UNC Science Expo, UNC Charlotte STEAM Innovation Expo, UNC Greensboro's Science Everywhere, and a dozen other official expos brought together thousands of people to celebrate STEM in large-scale community events.

"It is hard to put the excitement for science we witnessed into words."
Anna Harris, Inspiring Innovation at CMoW



"I had several parents comment on our event board which highlights free events in North Carolina. They were saying that when you have a family you can't always afford to go to many events due to the cover charge. And having so many free events was great."

- Vickie Sealock,
NC Dept of Commerce

NCSCIFEST SUPER FAN

FOR THE LOVE OF SCIENCE

Huntersville parent Peter Chisolm first learned about the North Carolina Science Festival several years ago while searching for STEM programs to engage his son, Essey Paul, in robotics. Chisolm had heard somewhere that it was STEM Education Month in North Carolina, and, after a bit of internet searching, stumbled upon the Festival's website. Since then, from the Gravity Games in Lenoir to events closer to home around the Charlotte area, the Festival has become an annual family tradition, creating cherished memories and sparking a love for science.

For the 2024 Festival, Chisolm and his family attended at least six events by their estimation, including a memorable visit to the Schiele Museum in Gastonia for the solar eclipse, as well as visits to the UNC Charlotte Expo, Charlotte Motor Speedway, the Asheville Maker Faire, and the safety fair in Burlington. It was at the Piedmont STEM Festival at North Carolina A&T, though, where Chisolm and family caught the eye of Festival staff member Nikitta Grillo, who spotted a plush Kelvin doll in the back of their car. "My son won Kelvin at a Festival event before COVID, so every time we're going to a Festival event, we put Kelvin in the car."

Chisolm's daughter, Millen, has also picked up the Festival bug, finding joy in the diverse activities available at events.



It was most evident this past year at UNC Charlotte's STEM Expo where arts and crafts and interactive demos were available for attendees. "At UNC Charlotte, there was so much to do — books, arts and crafts, healthcare activities. It was great to have something for everyone," she added.

Reflecting on the importance of the Festival, Chisolm noted, "For me, it's about sharing my love for STEM with my kids and seeing if they pick up the passion I have. These events make learning fun and accessible, and the excitement continues long after we leave." Chisolm and family are already looking forward to the 15th Festival next year, where they hope to continue to make more memories together.

EXPANDING ACCESS



SCIENCE FOR ALL

Now in its 14th year, the 2024 Festival featured public events in 78 counties across the state of North Carolina, expanding into 15 more counties than last year, thanks to our amazing partners. With the help of our partners, events expanded to several rural counties across the state.

Partners such as Person Early College for Innovation and Leadership exposed middle school students in Roxboro, NC to STEM by planning a campus wide STEM Expo led by Early College students.

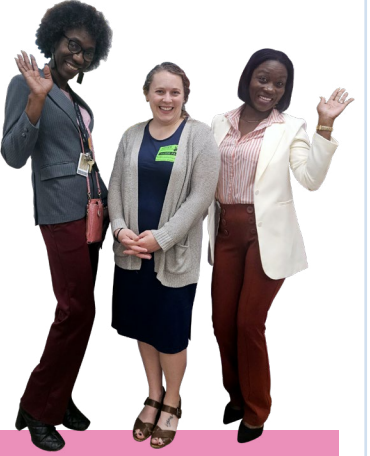
For the first time, access to STEM by a private HBCU, Johnson C. Smith University, exposed students to careers in E-Sports. NCSSM-Morganton planned an engaging, cross curricular event for all 5th graders in Burke County as well as students from the NC School of Deaf. The passion, dedication and commitment of our partners to STEM education was displayed in every event throughout April.

SCHOOL INITIATIVES



SCIENTISTS TAKE OVER MIDDLE SCHOOL CLASSROOMS

SciMatch is a signature K-12 program of the North Carolina Science Festival that connects STEM professionals with middle school classrooms across North Carolina throughout the month of April. Scientists are paired with teachers and spend a day taking over the classroom to lead hands-on activities and provide students an opportunity to meet and interact with people who use STEM in their careers.



"My favorite quote from a student was: 'Wow! I am so glad that I came to school today instead of skipping. This was so cool!'"

- SciMatch STEM Professional

A DECADE OF DUKE ENERGY SCIENCE NIGHTS

The Duke Energy Science Night program is designed to help elementary schools host a fun science event for their students and families by providing a kit that includes all the materials for hands-on activities plus instructions (in English and Spanish), a planning guide, and several other support resources. This year marked a decade of Duke Energy Foundation sponsorship of the program and set a new record with more than 260 participating schools throughout 97 NC counties.



"Days later and our students are already asking about science night for next year. The love of science definitely blossomed from that night!"

- Duke Energy Science Night host



CELEBRATING SCIENCE AROUND NORTH CAROLINA

-  SCHOOL EVENTS
-  PUBLIC EVENTS



Appalachian State
Dark Sky
Observatory



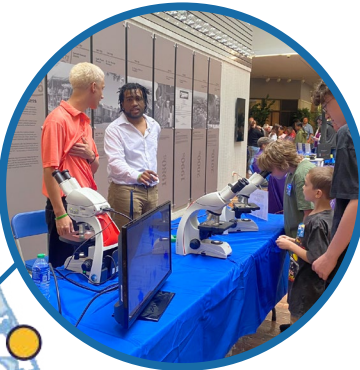
American
Tobacco Trail,
Durham



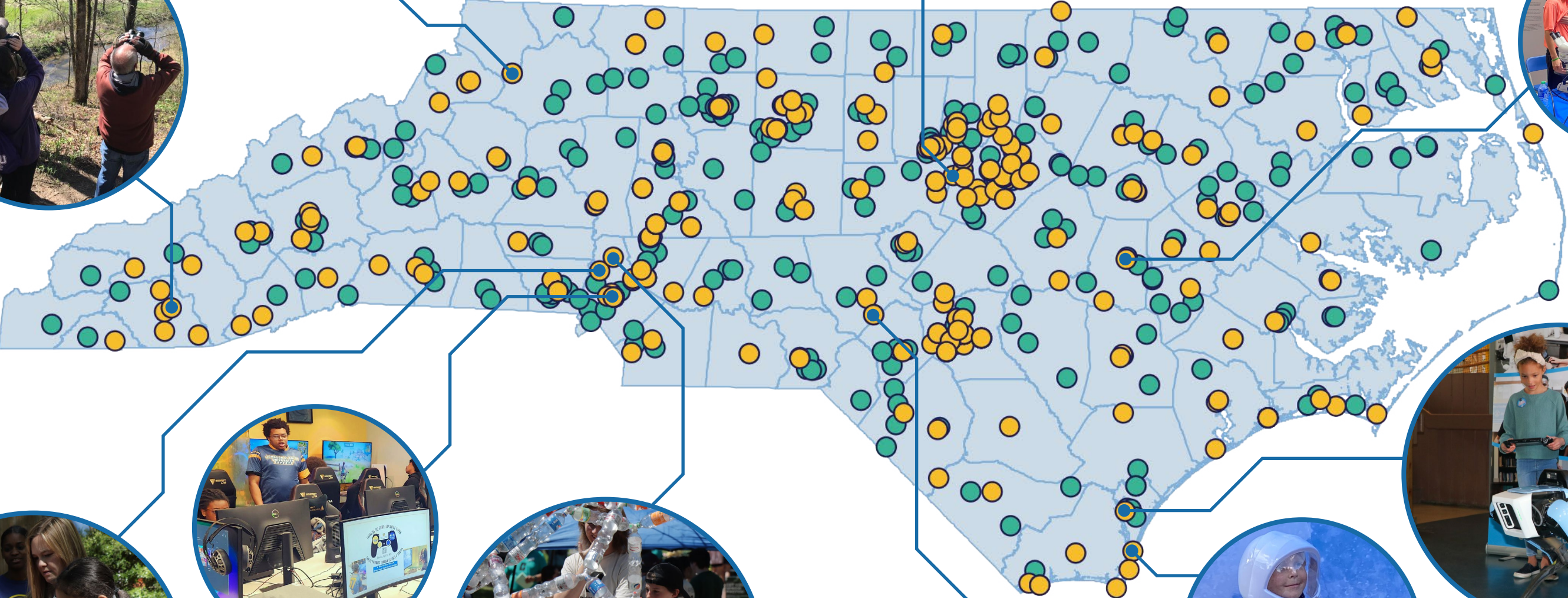
"It's always so much fun to watch younger kids try on the cleanroom suits and excitedly shout 'I'm a scientist!'"
- Emily Snell (Discover the Unseen: Exploring Science's Tiny Marvels)



Mainspring
Conservation Trust,
Franklin



Wayne Community
College, Goldsboro



Johnson C. Smith University,
Charlotte



UNC Charlotte STEAM
Innovation Expo



Children's Museum
of Wilmington



Carolina Raptor Center,
Huntersville



Weymouth Woods
Sandhills Nature Preserve,
Southern Pines



Cape Fear Museum,
Carolina Beach State Park

EXPLORING STEM CAREERS

INSPIRING YOUNG MINDS

Created as a collaboration between Camden County Schools and Elizabeth City State University (ECSU), the Exploring STEM Careers event held on April 9 was an opportunity to engage local 5th graders in STEM experiences beyond the traditional classroom setting.

Professor Shatoya Covert, Lecturer of Mathematics at ECSU, coordinated with key Camden County Schools professionals to immerse students in hands-on STEM learning activities. These included robotics, solar and hydrogen energy projects, critical thinking, and design challenges. “We developed a plan to engage students with several hands-on learning STEM concepts,” reflected Covert. “The 5th graders were able to engage with ECSU faculty, staff, and students who were instrumental in showcasing their knowledge in the activities.”

From Covert’s perspective, the event’s most impactful moment was witnessing the interaction between students with ECSU’s Department of Mathematics, Computer Science, and Engineering Technology and the 5th graders. “To witness college students take on the task of instructing and engaging with 5th graders was most definitely the event’s highlight. In moments like these, both populations of students were afforded opportunities not normally provided in the traditional classroom setting,” Covert shared. This interplay provided younger students with unique learning opportunities while allowing college students a place to develop teaching and mentorship skills.

After the event, feedback received from Camden Intermediate was overwhelmingly positive. “The 5th graders were provided with a survey, and approximately 70% of respondents indicated the event made STEM learning fun, bringing them an awareness of STEM in daily life while teaching them about STEM careers,” Covert reported.

The Exploring STEM Careers event demonstrates how early involvement in STEM can inspire and empower the next generation of scientists, engineers, and beyond.

“STEM is a pertinent lifeline to the development of the future. We, as educators, are obligated to ensure students have awareness and access to make their imprint on the world as meaningful as possible,” remarked Covert. “It is through these events where their minds can be challenged and channeled to incite innovations that will benefit society in the long run,” she stated.



NC SCIENCE TRAIL/NC STATE PARKS

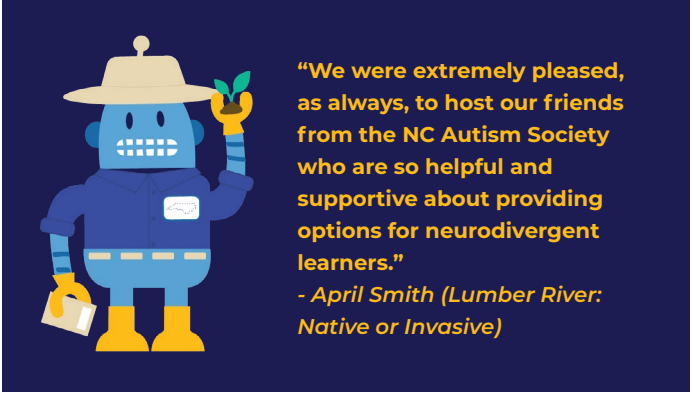
REACHING RURAL AREAS

This year, the NC Science Trail hosted four impactful Science Festival events to expand STEM programming to rural areas of North Carolina. “Both the NC Science Trail and the NC Science Festival aim to reach more rural parts of the state that have less STEM programming in general,” said Dr. April C. Smith, Executive Director. “The Science Trail partners with all of the NC State Parks, which are often located in rural areas, so we thought that would be the most suitable location for our rural NCSciFest events.”

The NC Science Trail and NC State Parks events focused on the theme “Nature’s Innovation,” which illustrates how nature adapts and thrives. Grandfather Mountain State Park teamed up with Appalachian State University’s Department of Botany to showcase native plants and wildflowers, emphasizing their ecological importance and their role in supporting native pollinators. Lumber River State Park hosted an event centered around the native Bowfin fish and the invasive snakehead species to raise awareness about the ecological threats posed by invasive species.

Hanging Rock State Park celebrated its 88th birthday with educational sessions and interactive activities focusing on its geological features. Meanwhile, Goose Creek State Park highlighted the vital role of bees in our ecosystem, featuring live demonstrations and seed bomb-making activities using native seeds.

Despite the success of these events, the experience underscored for the NC Science Trail team the challenges of delivering educational programming in rural areas. Engaging local groups and leveraging social media



platforms specific to the community, such as homeschool parent Facebook groups, proved essential in spreading the word effectively. “Parents are willing to bring their kids longer distances for educational events if they know they are worth it,” reflected Smith. “So, I think the main takeaway from holding four rural events is that you have to find interested local groups and get them to help with advertising within their social circles.”

Since its launch in April 2023, the NC Science Trail has worked together with Festival staff to help to inspire the next generation of scientists and provide reliable resources to the public. “The public knows that the NC Science Festival has done great work around the state for many years,” remarked Smith. “They know that wherever the NCSciFest brand appears, there will be quality STEM education. That’s a great reputation that we’re thrilled to be able to partner with.”

“I would say that the NC Science Festival no longer *fits into* STEM educational opportunities; NCSciFest *creates* STEM educational opportunities for our state.”



PARTNER ORGANIZATIONS

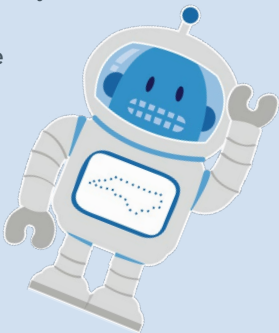
THE NORTH CAROLINA SCIENCE FESTIVAL WOULD LIKE TO THANK THE FOLLOWING PARTNERS FOR THEIR LEADERSHIP IN SHARING STEM WITH THEIR COMMUNITIES:

4th Aura Club	Bolton Elementary School	Children's Museum of Jacksonville
A.C. Reynolds Middle School	Bonlee School	Chinquapin Elementary School
Ackland Art Museum	Boonville Elementary School	City of Charlotte: Landscape Management
Acme Delco Elementary School	Brentwood Elementary School	City of Durham Parks and Recreation
After School Brilliance	Bridgeton Elementary School	Clement Elementary School
Aggie Academy	Broad Creek Middle School	Cliffdale Elementary School
Alamance Community College	Brunswick Community College	Clyde Elementary School
Alamance County Public Library: North Park Branch	BSA Troop 40	Cognition Davie
Alpha Academy	Buckland Elementary School	College Lakes Elementary School
Animal Park at the Conservators Center	Bugg Magnet Elementary School	College of The Albemarle
Appalachian State University	Burnsville Elementary School	Columbia Middle School
Aquarium & Shark Lab by Team ECCO	Burton Elementary School	Cooleemee Elementary School
Asheboro Public Library	C.C. Spaulding Elementary School	Core Sound Waterfowl Museum & Heritage Center
Asheville Makers	Cabarrus County Home School Association	Corning Life Sciences
Asheville Museum of Science	Cabarrus County Public Library:	Courtney Elementary School
Astronomy on Tap in the Triangle	• Harrisburg Branch	Cowan Museum of History and Science
Aulander Elementary School	• Kannapolis Branch	Craven Community College
Aurora Fossil Museum	• Midland Branch	Creeside Elementary School
B.O. Barnes Elementary School	Caldwell Applied Sciences Academy	Creswell Elementary School
Badin Elementary School	Caldwell County Schools	Culbreth Middle School
Bailey Elementary School	Cambrex	Cumberland County Public Library & Information Center:
Bald Head Island Conservancy	Camden Middle School	• Bordeaux Branch
Banoak Elementary School	Campbell University	• Cliffdale Regional Branch
Battleground Elementary School	Cape Fear Bird Observatory	• East Regional Branch
Bearfield Primary School	Cape Fear Botanical Garden	• Headquarters Branch
Beaufort Elementary School	Cape Fear Museum	• Hope Mills Branch
Belmont Elementary School	Cape Hatteras Elementary School	• North Regional Branch
Belmont Middle School	Carolina Raptor Center	• West Regional Branch
Bentonville Battlefield State Historic Site	Carolina Wetlands Association	Cumberland County Schools: Go Green Initiative
Berewick Elementary School	Carrington Middle School	D.C. Virgo Preparatory Academy
Bertie County Public Library	Carteret Community College	Davie County Virtual School
Bethel Middle School	Carvers Creek State Park	D.F. Walker Elementary School
Bethel School	Catawba College	Discovery Place Kids Huntersville
Bethesda Elementary School	Catawba Science Center	Discovery Place Kids Rockingham
Beverly Hills STEM Elementary School	Centennial Campus Magnet Middle School	Discovery Place Science
BF Grady Elementary School	Central Elementary School	Dismal Swamp State Park
Bill Hefner Elementary School	Chadbourn Elementary School	Douglas Elementary School
Biogen	Charlotte Motor Speedway	Drexel Elementary School
Bladen County Public Library	Chatham County Schools: Neon Krakens Robotics Team	Duke Energy
Blue Jay Point County Park	Chatham Grove Elementary School	Duke University
Blythe Elementary School	Cherokee County Schools: 21st Century Community Learning Center	

Durant Nature Preserve
E.B. Frink Middle School
E.J. Hayes Elementary School
E.O. Young Elementary School
East Albemarle Elementary School
East Carolina University
East Rockingham Elementary School
Eastern Wayne Elementary School
Eastfield Global Magnet School
Easton Elementary School
Elizabeth Cashwell Elementary School
Elizabeth City State University
Endy Elementary School
Envision Science Academy
Ephesus Elementary School
Erwin Elementary School
Etowah Elementary School
Fairview Heights Elementary School
Falkland Elementary School
Fascinate-U Children's Museum
Fayetteville State University
FIRST North Carolina
Forest City Dunbar
Forest Hill Elementary School
Forest Hills Global Elementary School
Forestville Road Elementary School
Forrest W. Hunt Elementary School
Forsyth County Public Library:
• Central Branch
• Malloy/Jordan East Winston Heritage Center Branch
Forsyth Technical Community College
Four Oaks Elementary School
Foust Elementary School
Fox Road Magnet Elementary School
FPG Bilingüe Elementary School
Franklinton Elementary School
Franklinton High School Math Club
Franklinton Middle School
FRC Team 8758 Tar-Robo Turtles
Fred A. Anderson Elementary School
Fred Wilson Elementary School
Frederick Douglass Elementary School
Full STEAM Ahead Carolina
Fuquay Varina Middle School
G.W. Bulluck Elementary School
Garner Parks, Recreation and Cultural Resources
Gaston College

Gaston STEM Leadership Academy
Gaston Virtual Academy
Gatesville Elementary School
Germanton Elementary School
Gibson Elementary School
Gilead Sciences
Gorges State Park
Graham Middle School
Grantham Elementary School
Granville Academy
Great Opportunities and Boundless Innovations for Girls
Green Hope Elementary School
Green Ridge Elementary School
Greene County Intermediate School
Greene County Middle School
Greene County Schools
Greensboro Science Center
Grier Middle School
Grove Park Elementary School
Guilford Technical Community College: Cline Observatory
Guy B. Phillips Middle School
H.H. Beam Elementary School
Haliwa Saponi Tribal School
Hamlet Middle School
Hammocks Beach State Park
Hanford Dole Elementary School
Harmony Elementary School
Harold Winkler Middle School
Harris Lake County Park
Harris Middle School Hosting Deyton Elementary School
Hawk Eye Elementary School
Hayesville Elementary School
Haywood Community College
Haywood County Public Library
Hazelwood Elementary School
Hertford County Public Library
Hertford Grammar School
Hiddenite Elementary School
Highland Renaissance Academy
Highlands Biological Station
Highlands-Cashiers Land Trust
Hilburn Academy
Historic Edenton State Historic Site
Historic Yates Mill County Park
Hodge Road Magnet Elementary School

Holly Shelter Middle School
Hominy Valley Elementary School
Hope Mills Library
Huntersville Elementary School
I.C. Imagine Public Charter School
Imagination Station Science and History Museum
Imperial Centre for the Arts & Sciences / Children's Museum & Science Center
Isothermal Community College
J. Glenn Edwards Elementary School
J.C. Sawyer Elementary School
J.S. Waters School
J.W. Coon Elementary School
J.W. McLaughlin Elementary School
Jackson County Public Library
James Sprunt Community College
Jarvisburg Elementary School
Jefferson Elementary School
Jenkins Elementary School
Jockey's Ridge State Park
Johnson C. Smith University Esports & Gaming Trifecta
Johnsonville Elementary School
Johnston Community College
Jones Senior High School
Jonesville Elementary School
Jordan Lake State Recreation Area
Kaleideum
Kathleen Clay Library
Kenansville Elementary School
Kerr Lake State Recreation Area
KidSenses Children's Interactive Museum
Kidzu Children's Museum
Kitty Hawk Elementary School
La Grange Elementary School
Lake James State Park
Lake Norman State Park
Lakewood Elementary School
Lee County Libraries
Lewisville Elementary School
Lewisville Middle School
Lincoln County Public Library
Lincoln Elementary School



PARTNER ORGANIZATIONS, CONTINUED

Lingerfeldt Elementary School	NC Division of Marine Fisheries	P.W. Moore Elementary School
Longview Elementary School	NC Geological Survey	Pactolus Global School
Lyle Creek Elementary School	NC Museum of Natural Sciences	Page Street Elementary School
Madison Middle School	• at Contentnea Creek	Pamlico County Middle School
Maiden Elementary School	• at Prairie Ridge Ecostation	Parkside Elementary School
Mainspring Conservation Trust	• at Whiteville	Parkview Village Elementary School
Mallard Creek STEM Academy	NC Piedmont Triad K-12 STEM Education Ecosystem	Paw Creek Elementary School
Marbles Kids Museum	NC School of Science and Mathematics:	PBS North Carolina
Mariam Boyd Elementary School	• Durham Campus	Pembroke Elementary School
Marion Elementary School	• Morganton Campus	Pender County Schools - BOE
Martin Millennium Academy	NC Science Trail	Perquimans Central School
Mary Scroggs Elementary School	NC Sea Grant	Perquimans County Middle School
Mattamuskeet School	NC State Laboratory of Public Health	Perry Harrison School
Mayland Earth to Sky Park	NC State Parks	Perry Memorial Library
McAdams	NC State University	Person Early College for Innovation and Leadership
Meadowbrook Elementary School	NC Wildlife Resources Commission	Petree Elementary School
Merchants Millpond State Park	NC Zoo	Piedmont Environmental Center
Methodist University	Neuse Regional Libraries	Piedmont Wildlife Center
Metrolina Regional Scholars Academy	New Century Middle School	Pine Forest Middle School
Micaville Elementary School	Newport Middle School	Pines Elementary School
Middlesex Elementary School	Newton Conover Middle STEM School	Pinkston Street Elementary School
Mocksville Elementary School	North Carolina Central University	Pinnacle Classical Academy
Monroe Avenue Elementary School	North Cove Elementary School	Plain View Elementary School
Morehead Planetarium & Science Center	North Elementary School	Pocosin Innovative Charter
Moss Hill Elementary School	North End Elementary School	Poplar Springs Elementary School
Mount Airy Museum of Regional History	North Kannapolis Elementary School	Prospect Elementary School
Mount Gilead Elementary School	North Rowan Elementary School	Queen Anne's Revenge Conservation Lab
Mount Vernon-Ruth Elementary School	North Shelby School	Rachel Freeman School of Engineering
Mountain View Elementary School	North Wilkesboro Elementary School	Randolph Community College
Muddy Sneakers	Northampton Memorial Library	Red Oak Middle School
Museum of Coastal Carolina	Northern Granville Middle School	Reedy Fork Elementary School
Museum of Life and Science	Northwest Elementary School	Regis University
Nantahala School	Oakboro Choice STEM School	Renaissance West STEAM Academy
Nash Community College	Oakley Elementary School	Richfield Elementary School
Nash Everywhere Digital Academy	Oaks Road Academy	Richlands Elementary School
Nashville Elementary School	Oakview Elementary School	River Bend Elementary School
National Institute of Environmental Health Sciences	Oakwood Elementary School	River Park North
NC A&T State University	Old Dock Elementary School	Riverside Elementary School
NC Aquarium at Fort Fisher	Old Salem Museums & Gardens	Riverview Elementary School
NC Center for Afterschool Programs:	Onslow County Museum and Environmental Education Center	Robbinsville High School
NC Flight Crew	Overhills High School Robotics Team	Robeson Planetarium and Science Center
NC Department of Commerce: Welcome Center Program	Oxendine Elementary School	Rocky Point Elementary School
NC Department of Environmental Quality	Oxford Preparatory School	Rocky River Elementary School

Rodgers Elementary School	St. Thomas More Catholic School
Rogers Lane Elementary School	Stanfield Elementary School
Roland Grise Middle School	STEM West
Ronda-Clingman Elementary School	Stokes School
Rosman Elementary School	Stoney Creek Elementary School
Rowan Public Library System	Stony Point Elementary School
Rowan-Cabarrus Community College	Sturgeon City
Rowan-Salisbury Southeast Middle School	Summerfield Elementary School
Rowland-Norment Elementary School	Summit Design and Engineering Services
RTI international	Sumner Elementary School
S&ME	Surry Community College
S. Ray Lowder Elementary School	Sustainable Sandhills
S.W. Snowden Elementary School	Swain County Schools
Salemburg Elementary School	Sylvan Heights Bird Park
Saluda Elementary School	T.S. Cooper Elementary School
Sandhills Community College	Thanksgiving Elementary School
Sandy Ridge Elementary School	The Children's Museum of Wilmington
SanLee Middle School	The Children's Playhouse
Schiele Museum	The Daniel Center for Math and Science
School for Creative Studies	The North Carolina Arboretum
Science Alliance of Eastern NC	The Science House: Catalyst
Science Fiction and Fantasy Federation - UNCG	The Swamp School
Scurlock Elementary School	Thomas Jefferson Middle School
Selma Elementary School	Tommy's Road Elementary School
Shady Brook Elementary School	Town of Nashville
Shoals Elementary School	Township Three Elementary School
Siler City Elementary School	Transylvania County Schools
Silk Hope School	Trent Park Elementary School
Smokey Mountain Elementary School	Triangle Land Conservancy
Socrates Academy	Trinity Middle School
South Davidson Middle School	Tyrrell Elementary School
South Davie Middle	UNC Asheville: Society of Physics Students
South Elementary School (Mebane)	UNC Chapel Hill
South Elementary School (Roxboro)	UNC Charlotte
South End Elementary School	UNC Greensboro
South Greenville Elementary School	UNC Pembroke
South Johnson Elementary School	UNC Wilmington
South Piedmont Community College	Union County Library
Southern Wake Academy	Union Elementary School
Southmont Elementary School	Union Hill Elementary School
Southside Ashpole Elementary School	Union Intermediate School
Southwest Elementary Global Academy	Upchurch Elementary School
Southwestern Randolph Middle School	US EPA
Southwood Elementary School	US Geologic Survey
Sparta Elementary School	Valley Springs Middle School
Sparta School	Vandalia Elementary School
Spring Valley Elementary School	Vass-Lakeview Elementary School

Vinson Bynum Elementary School
Wake County:
• Solid Waste Management Division
• Parks, Recreation and Open Spaces Division
• Public Libraries
Wake Forest Institute for Regenerative Medicine
Wake Forest iSTEM Magnet Elementary School
Wake Forest University
Wake Tech Community College
Wake Young Men Leadership Academy
Walkertown Elementary School
Walnut Cove Elementary School
Warlick Academy
Washington Street Elementary School
Wayne Community College
We Plant it Forward
Webb A. Murray Elementary School
Weddington Middle School
West Bertie Elementary School
West Greene Elementary School
West Hoke Elementary School
West Lee Middle School
West McDowell Middle School
West Oxford Elementary School
West Pine Elementary School
West Rockingham Elementary School
West Rowan Elementary School
West Smithfield Elementary School
Westarea Elementary School
Western Carolina University
Weymouth Woods Sandhills Nature Preserve
Wiley Magnet Middle School
Wilkerson Nature Preserve
Wilkes Central High School
Wilson's Mills Elementary School
Winston-Salem Preparatory Academy
Winston-Salem State University
Wolfspeed
Woodington Middle School
Yancey County Public Library
Zebulon Gifted & Talented Magnet Elementary School
Zebulon Gifted & Talented Magnet Middle School



The North Carolina Science Festival
is made possible by the generous
support of its sponsors.

PRESENTING SPONSOR



DIAMOND CHAMPION



PLATINUM SPONSORS



GOLD SPONSORS



BRONZE SPONSORS



PROUDLY PRODUCED BY



MOREHEAD
PLANETARIUM+
SCIENCE CENTER



SPARKING CURIOSITY
FOR GENERATIONS

Visit NCSciFest.org to learn more about how you can participate.

Copyright © 2024 University of North Carolina