

SCIENCE



24/7

EVERY  
DAY : WHERE : ONE

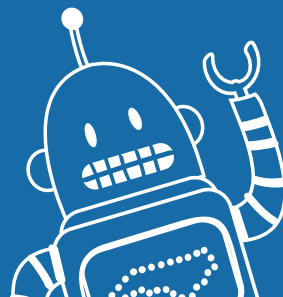


2025.04



2025

IMPACT  
REPORT



## FESTIVAL SUMMARY

NCSciFest is the first statewide celebration of its kind in the nation. This April, we celebrated our 15th anniversary and took it back to basics with our theme: **Every Day, Every Where, Every One**, which highlighted the everyday science by everyday people taking place in North Carolina and beyond.

During NCSciFest, community-based events are hosted by museums, science centers, colleges, universities, businesses, parks, libraries, and hundreds of K-12 schools around North Carolina. Founded in 2010 by Morehead Planetarium and Science Center, NCSciFest has served over 3.5 million participants of all ages from all 100 counties since its inception.

## CONTACT

### Morehead Planetarium and Science Center

The University of North Carolina  
at Chapel Hill



**Campus Box 3480**  
**Chapel Hill, NC 27599-3480**



**ncsciencefestival.org**



**ncscifest@unc.edu**



**919-962-3274**

## ADVISORY BOARD

**CHRISTY L. SHAFFER, PH.D., Chair**  
*Hatteras Venture Partners*

**ALEX CAMERON**  
*Biogen*

**CHRIS CARTER**  
*Duke Energy*

**ALFRED G. CHILDERS, PH.D.**  
*MagellanScience.org*

**MARILYN FOOTE-HUDSON**  
*NC GlaxoSmithKline Foundation*

**ANN B. GOODNIGHT**  
*SAS*

**JOHN HARDIN, PH.D.**  
*NC Department of Commerce*

**DELISHA HINTON**  
*Wolfspeed*

**HOWARD N. LEE**  
*Howard N. Lee Institute*

**JAMES LIN**  
*Gilead Sciences*

**CHANCELLOR EMERITUS JAMES MOESER**  
*UNC-Chapel Hill*

**LOUIS MUGLIA, M.D., PH.D.**  
*Burroughs Wellcome Fund*

**THAN POWELL**  
*Surescripts*

**ANGELA QUICK, ED.D.**  
*RTI International*

**CHANCELLOR TODD ROBERTS**  
*NC School of Science and Mathematics*

**CHARLES A. SANDERS, M.D.**  
*Retired Chairman & CEO, GlaxoSmithKline*

**RICHARD SUPERFINE, PH.D.**  
*UNC-Chapel Hill*

**DEB THOMAS, PH.D.**  
*UNC-Charlotte*

**JULIA WHITE**  
*NC Governor's Office*

**CHANCELLOR W. RANDOLPH WOODSON, PH.D.**  
*NC State University*

**DENISE YOUNG, ED.D.**  
*NC Museum of Natural Sciences*

## 2025 NCSCIFEST TEAM

**ERIK MACINTOSH**  
*NCSciFest Manager*  
[erikmac@unc.edu](mailto:erikmac@unc.edu)

**TODD BOYETTE, PH.D.**  
*NCSciFest Co-Founder*  
[todd\\_boyette@unc.edu](mailto:todd_boyette@unc.edu)

**CRYSTAL HARDEN, ED.D.**  
*Director of Program and Access Initiatives*  
[charden@unc.edu](mailto:charden@unc.edu)

**ANDREW AMODEI**  
*Chief Development Officer*  
[aamodei@unc.edu](mailto:aamodei@unc.edu)

**ADAM PHELPS**  
*NCSciFest Sponsorships*

**NIKITTA GRILLO**  
*Community Engagement Specialist*  
[grillon@unc.edu](mailto:grillon@unc.edu)

**STEPHANIE COBERT**  
*Marketing and Communications Manager*  
[stephcob@unc.edu](mailto:stephcob@unc.edu)

## DEAR NCSCIFEST PARTNERS,

The 2025 North Carolina Science Festival was an incredible celebration thanks to you – our event hosts, teachers, scientists, sponsors, volunteers, and the thousands of North Carolinians who participated in events.

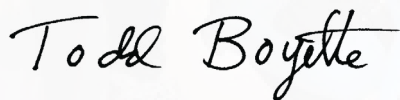
In our 15th year, the Festival has continued to grow, expanding access to STEM opportunities to more parts of the state than ever before. Events for the public happened on university campuses, in local libraries, at state parks, and all sorts of other incredible locations across our state. These diverse and exciting events gave visitors a chance to interact with the incredible science and scientists that are at the forefront of scientific research and discovery.

Our school initiatives continue to serve educators across our state. We provided activity kits to hundreds of elementary schools to host science nights for their school communities and sent scientists across North Carolina to lead hands-on activities in middle school classrooms.

As we look to build on the momentum built over the past 15 years, we're excited to bring even more new and innovative events and establish new traditions to ensure opportunities in science for all.

See you in 2026!

**Best wishes and Science for All,  
Todd & Erik**



Todd Boyette,  
NCSciFest Co-Founder



Erik MacIntosh,  
NCSciFest Manager

**WE'RE PROUD TO PARTNER  
WITH NCSCIFEST IN 2025  
AND BEYOND. TOGETHER,  
WE'RE INSPIRING THE FUTURE  
SCIENTISTS WHO WILL  
ADVANCE THE PROGRESS OF  
NORTH CAROLINA.**

-RTI President and CEO Tim J. Gabel



Morehead Planetarium and Science Center, Chapel Hill

## BY THE NUMBERS

### OVERALL FESTIVAL PARTICIPATION

1,291

STATEWIDE EVENTS

3,522

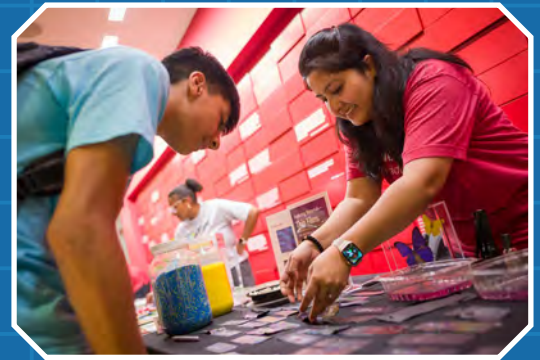
PARTICIPATING  
SCIENTISTS

185,361

NCSCIFEST  
PARTICIPATION

100%

OF COUNTIES  
REACHED



NC Science Olympiad, Raleigh



NC State Laboratory of Public Health, Raleigh

“

It was amazing to look around to see strangers becoming friends and the community enjoying a shared experience.

- Abaigh Robinson,

Statewide Star Party at Eno River State Park



Science Alliance of NC, Rocky Point



UNC-Wilmington, Wilmington



Oakboro Choice STEM School, Oakboro





NC Science Festival, Sanford



5

BILLBOARDS AROUND NC



Frank Porter Graham Elementary, Chapel Hill

## PUBLIC EVENTS SUMMARY

88

COUNTIES HELD  
PUBLIC EVENTS

692

PUBLIC EVENTS

100,629

ATTENDEES

## SCHOOL INITIATIVES

6,991

SCIMATCH  
STUDENTS

58,261

DUKE ENERGY  
SCIENCE NIGHTS  
PARTICIPANTS



Cape Fear Museum, Carolina Beach

## 2025 NCSCIFEST THEME

### EVERY DAY, EVERY WHERE, EVERY ONE

This year's theme, "Every Day, Every Where, Every One," highlighted the importance of everyday science. From your local barber, sous chef, and even our own individual daily rituals, everyone is a scientist!



Greene County Schools, Snow Hill



Isothermal Community College, Spindale



Scotland County Memorial Library, Laurinburg



UNC-Charlotte, Charlotte



Alamance County Public Libraries, Burlington

## 15 YEARS OF SCIENCE FOR ALL

### ANNUAL EVENTS

Over the past 15 years, there have been some amazing events that started as part of the NC Science Festival and have become established traditions that audiences look forward to every year.



UNC-Charlotte, Charlotte

### EXPOS

Some of the biggest events on the Festival calendar have become important traditions. Large-scale expos bring together thousands of people to celebrate science and engage with experts on college and university campuses. Within those events, some must-see annual traditions have emerged, like Dr. Tom Schmedake's chemistry combustion show at the UNC Charlotte STEAM Innovation Expo.



NC School of Science and Mathematics, Durham

### LEAN IN

NCSSM's Lean In, Women in Science is an annual event that features accomplished female scientists talking about their careers, challenges, and successes, then gives attendees an opportunity to join them in smaller groups for informal conversations over dinner.





Funny story – one of the children was not very excited that storytime was science themed because ‘science is hard, like homework’. Needless to say, by the end of it she was begging me for one of the goodie bags I made the children with the materials you guys sent to us! Specifically she requested one of the...‘I [heart] Science’ buttons...she proudly wore around the library.

- Leighanna Lane, Library Assistant at Shepard-Pruden Memorial Library



Queen Anne's Revenge Conservation Lab, Greenville

## PIRATES & SHIPWRECKS

Each April, the Queen Anne's Revenge Conservation Lab hosts an open house to allow visitors a chance to get up close and personal with artifacts recovered from the wreck of Blackbeard's flagship off the coast of North Carolina. The conservationists and archaeologists highlight how science and the arts meet to record and care for local history.



Chinquapin Elementary, Chinquapin

## SCIENCE NIGHTS

In 2012, 50 elementary schools received kits filled with everything they needed to host science nights when we launched the brand-new Thorp Science Night initiative. This program has grown remarkably over the years, and thanks to the Duke Energy Foundation's support, there have been 2,173 science nights over the years.



Children's Playhouse, Boone

## PLAYHOUSE BUILDFEST

The Children's Playhouse in Boone hosted their 10th annual BuildFest event this year, with more than 100 hands-on activities plus exciting stage shows. Held at Watauga County High School, this fun event drew more than 1,700 people as one of the key events in NC's High Country.



Fuquay-Varina Middle School, Fuquay-Varina

## SCIENTIST VISITS

More scientists than ever before visited middle school classrooms as part of the SciMatch initiative. Researchers like Jessica Hoffman from UNC's Bowles Center for Alcohol Studies traveled across the state to take over classrooms for the day and lead hands-on activities that inspire the next generation of STEM professionals.



# CELEBRATING SCIENCE AROUND NORTH CAROLINA



Smoky Mountains STEM Collaborative, Sylva

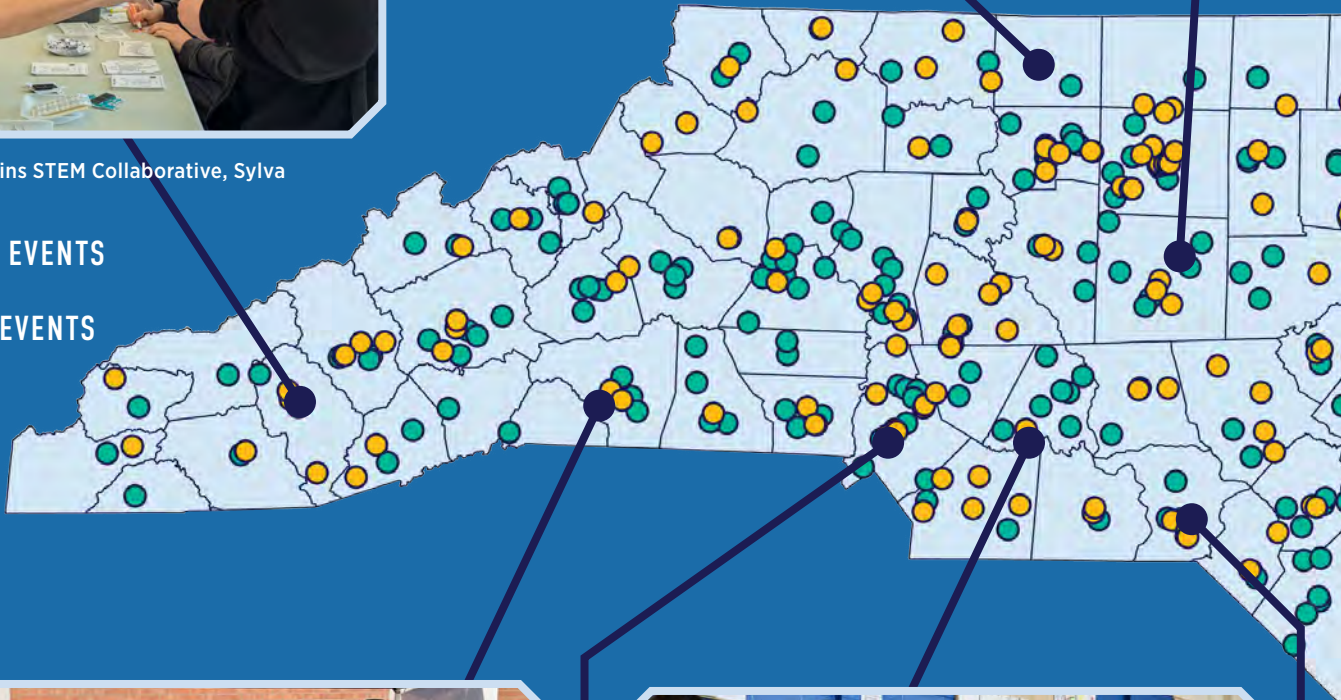


Hanging Rock State Park, Danbury



Asheboro Public Library, Asheboro

- SCHOOL EVENTS
- PUBLIC EVENTS



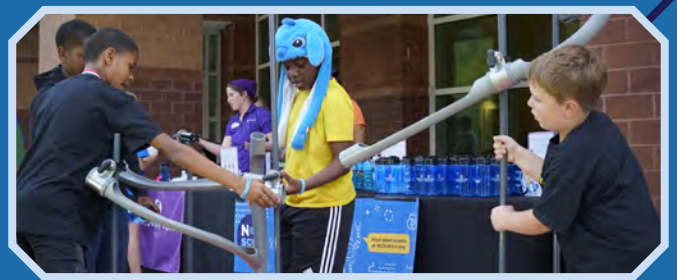
Isothermal Community College, Spindale



Oakboro Choice STEM School, Oakboro



Charlotte Combat Robot Club, Charlotte



Discovery Place Kids, Rockingham





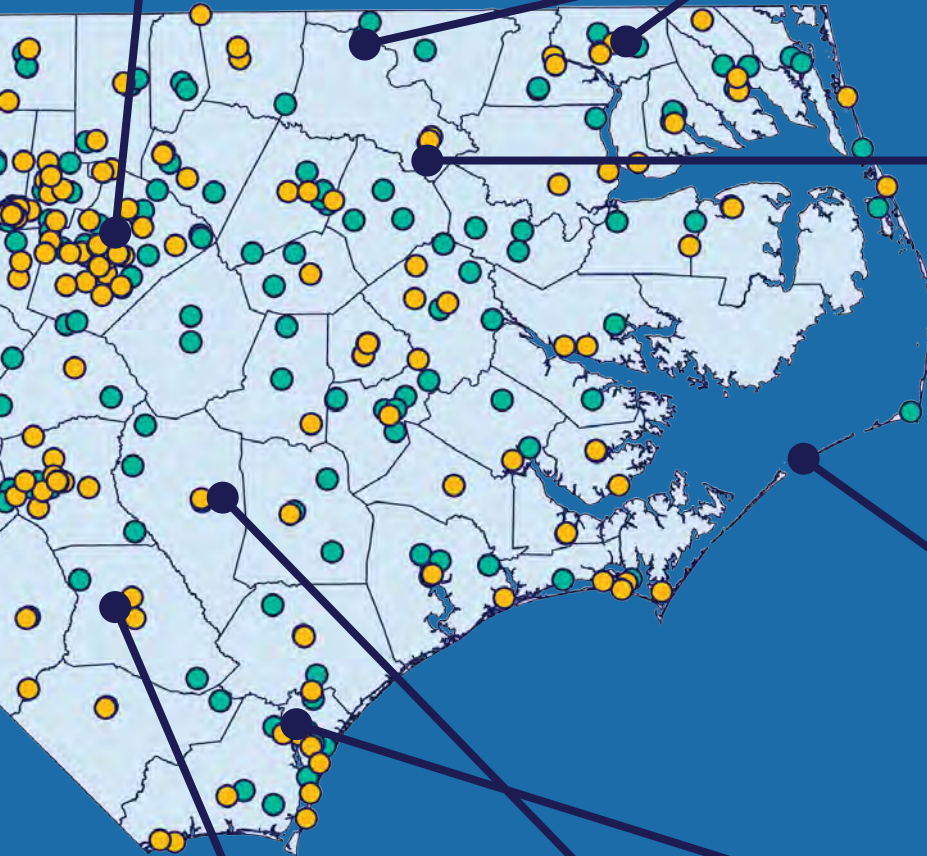
NC State Laboratory of Public Health, Raleigh



Merchants Millpond State Park, Gatesville



Halifax Composite Squadron, Roanoke Rapids



Sylvan Heights Bird Park, Scotland Neck



Ocracoke Alive, Ocracoke



Bladen County Library, Elizabethtown



Sampson County Library, Clinton



Children's Museum of Wilmington, Wilmington



# HIGHLIGHTS

## MOUNTAIN SCIENCE EXPO

As an event host in the inaugural NC Science Festival back in 2010, the NC Arboretum has been a key partner in Western NC for the past 15 years.

In 2012, the Arboretum launched the Mountain Science Expo as a way to celebrate science and scientists in the Asheville area. In the first year, 600 people came out to engage with hands-on activities from local partners. The overwhelming success of this new initiative confirmed the excitement and appetite for STEM education engagement opportunities in WNC.

In 2013, attendance doubled to 1,200, then doubled again the following year to 2,400, where capacity and attendance stabilized until the 2020 pandemic. The successes of the early Mountain Science Expos inspired the Arboretum's team to explore other education events including Monarch Butterfly Day and Nature Play Days.

Participation in the NC Science Festival has also catalyzed efforts to expand access to environmental science in Western NC and beyond. By making "golden tickets" available through schools and libraries, the Arboretum has reduced costs to entrance and allowed more visitors to attend with these free passes.

These partnerships have led them to recognize the importance of libraries as community partners, which have been key partners to host resources that expand the reach of their ecoEXPLORE initiative.



**Fall is usually an amazing time in WNC, but in the aftermath of Hurricane Helene nobody had a good time. Spring has been particularly important for everyone in the area and having the Mountain Science Expo come back in the scale that it did with all the partners made things feel like it was going to be alright.**

*- Jonathan Marchal,  
Director of Education,  
NC Arboretum*

In recent years following the 2020 shutdown, programming has trended towards pre-pandemic levels. Planning was well underway for the 2025 Mountain Science Expo when tragedy struck the region. Hurricane Helene had devastating impacts across Western North Carolina, and severely damaged the Arboretum with more than 5,000 trees downed across the campus. Arboretum staff worked tirelessly to re-open the campus and get back to offering



NC Arboretum, Asheville

regular programming, including the popular Winter Lights and a full slate of spring events.

This year marked the first time the Mountain Science Expo back in all its glory since 2019, with thousands of visitors engaging with incredible hands-on activities from dozens of STEM partners that represented a unique cross-section of education and industry in the region.

As the Arboretum looks forward to the future, they're on a trajectory to continue growing the Expo, working with schools to add opportunities for students who may not otherwise be able to attend.



Left to right: NC Arboretum, Asheville



## NEW EVENTS | VANCE-GRANVILLE



Vance-Granville Community College, Creedmoor



Vance-Granville Community College, Creedmoor



STEM Outreach has long supported the North Carolina Science Festival, providing sponsorship and assisting community colleges and educational organizations in planning and hosting their own science events. Recognizing the growing interest among community colleges to participate, we expanded our efforts to support them more comprehensively by creating a kit of several STEM related, family friendly activities which change each year.

In 2025, we provided materials and training to 26 community colleges, enabling them to host 30 Science Festival events across their campuses, reaching an estimated 6,300 participants. Our long-term goal is for all 58 North Carolina community colleges to host Science Festival events, ultimately engaging communities in all 100 counties.

*-Courtney Behrle, Senior Director of STEM Outreach,  
BioNetwork*

### COMMUNITY FOCUS

Each year the Festival is celebrated by hundreds of partners across the state of NC. North Carolina's community colleges, in partnership with BioNetwork, have been a backbone for the Festival since the beginning. Over half of NC's community colleges participated in this year's Festival.

Vance-Granville Community College hosted its first STEAM Expo at their southern campus in Creedmoor, NC, with the support of Altec, Inc. VGCC served over 150 participants at this community event in rural NC. They partnered with 2 high school robotics clubs, 3 local industry leaders and several departments across the five VGCC campuses. Altec, Inc. was on hand to take attendees 50-60ft in the air in their bucket trucks. Attendees used flight simulators to guide planes through the air and land them on the tarmac with staff volunteers from Ontic Engineering and Manufacturing, Inc.

Attendees also engaged in hands-on activities provided by BioNetwork, which has been instrumental in facilitating Festival participation among community colleges across the state. Their commitment to aligning industry skills with education has expanded the number of community college Festival events, by offering a variety of free resources through their STEM Outreach program.



Vance-Granville Community College, Creedmoor

# PARTNER ORGANIZATIONS

## THE NORTH CAROLINA SCIENCE FESTIVAL WOULD LIKE TO THANK THE FOLLOWING PARTNERS FOR THEIR LEADERSHIP IN SHARING STEM WITH THEIR COMMUNITIES:

A.C. Reynolds Middle School  
AAUW North Carolina  
Aberdeen Elementary School  
Acme Delco Elementary School  
Aggie Academy  
Ahoskie Elementary School  
Alamance Community College  
Albemarle Regional Library  
• Bertie County Public Library  
• Hertford County Public Library  
Alamance County Public Library  
• North Park Branch  
Alexander County Library  
Alleghany County 4-H/Alleghany Public Library  
Alpha Academy  
Alston Ridge Middle School  
American Red Cross (Youth Action Campaign)  
American Renaissance School  
Anderson Elementary School  
Animal Park at the Conservators Center  
Appalachian State University  
Arndt Middle School  
ArtQuest at GreenHill Center for NC Art  
Asheboro Public Library  
Asheville Makers  
Asheville Museum of Science  
Ashley Elementary School  
Astronomy on Tap in the Triangle  
Atkins Academic & Technology High School  
B.F. Grady Elementary School  
Badin Elementary School  
Bailey Elementary School  
Banoak Elementary School  
Battleground Elementary School  
Bearfield Primary School  
Beaufort Elementary School  
Beaver Dam Elementary School  
Belmont Elementary School  
Benvenue Elementary School  
Bessemer City Central Elementary  
Bethany Community School  
Bethel Elementary School  
Bethel Middle School  
Bethel School  
BioNetwork

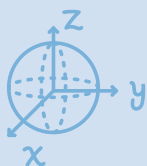
Bladen County Public Library  
Blue Ridge Elementary School  
Blythe Elementary School  
Bonlee School  
Bradley Creek Elementary School  
Brentwood Elementary School  
Brevard Middle School  
Bridgeton Elementary School  
Brier Creek Elementary School  
Broad Creek Middle School  
Broadway Elementary School  
Brown Educational Initiative  
Brunswick Community College  
Brunswick County Library  
Brunswick County Schools  
Buckland Elementary School  
Bunn Middle School  
Burnsville Elementary School  
Burton Elementary School  
Butler Avenue Elementary School  
Butner-Stem Elementary School  
C.D. Owen Middle School  
C.F. Pope Elementary School  
C.G. Credle Elementary School  
Cabarrus County Home School Association  
Cabarrus County Public Library  
• Kannapolis Branch  
Camden Middle School  
Cape Fear Botanical Garden  
Cape Fear Museum  
Cape Hatteras Elementary School  
Carolina Raptor Center  
Carteret Community College  
Casar Elementary School  
Cash Elementary School  
Catawba Science Center  
Central Carolina Academy  
Central Elementary School (Albemarle)  
Central Elementary School (Barco)  
Central Elementary School (Hillsborough)  
Central Elementary School (Jackson)  
Chapel Hill Public Library  
Charlotte Motor Speedway  
Chatham Community Library

Cherokee County Schools: 21st Century Community Learning Center  
Children's Museum of Jacksonville  
China Grove Elementary School  
Chinquapin Elementary School  
City of Charlotte: Landscape Management  
City of Durham Parks and Recreation  
Clarke Elementary School  
Clement Elementary School  
Clemmons Middle School  
Cleveland County Library System  
Cliffs of the Neuse State Park  
Coker-Wimberly Elementary School  
Colerain Elementary School  
College of The Albemarle  
Columbia Middle School  
Contentnea-Savannah K-8 School  
Core Sound Waterfowl Museum & Heritage Center  
Corriher-Lipe Middle School  
Craven Community College  
• Havelock Campus  
• New Bern Campus  
Culbreth Middle School  
Cumberland County Public Library & Information Center  
• Bordeaux Branch  
• Cliffdale Regional Library  
• East Regional Branch  
• Headquarters Branch  
• Hope Mills Branch  
• North Regional Branch  
• West Regional Branch  
Currituck County Middle School  
Darden Middle School  
Davidson College  
Davie County Public Library  
Dillard Academy Charter School  
Dillard Drive Elementary School  
Discovery Place  
• Discovery Place Kids Rockingham  
• Discovery Place Science  
Duke University  
E.B. Frink Middle School  
E.J. Hayes Elementary School  
East Albemarle Elementary School  
East Alexander Middle School





East Arcadia School  
 East Cary Magnet Middle School  
 East Garner Elementary School  
 East Hoke Middle School  
 East Lincoln Middle School  
 Eastfield Global Magnet  
 Edgewood Elementary School  
 Elizabeth City State University  
 Empower All Incorporated  
 Endeavor Charter School  
 Endy Elementary School  
 Envision Science Academy  
 Ephesus Elementary School  
 Erwin Elementary School  
 Estes Hills Elementary School  
 Etowah Elementary School  
 Fairview Heights Elementary School  
 Fascinate-U Children's Museum  
 Fayetteville State University  
 FIRST North Carolina  
 Forest City-Dunbar Elementary School  
 Forest Hill Elementary School  
 Forest Regen Climate Initiative  
 Forrest W. Hunt Elementary School  
 Forsyth County Public Library  
 • Central Library  
 • Paddison Memorial Branch Library  
 • Southside Branch  
 Frank Porter Graham Bilingue Elementary School  
 Franklinton Elementary School  
 Franklinton High School  
 Franklinton High School Math club  
 Franklinton Middle School  
 Franklinville Elementary School  
 Fred A. Anderson Elementary School  
 Fremont Elementary School  
 Full STEAM Ahead Carolina Inc.  
 Fuquay-Varina Middle School  
 G.R. Whitfield School  
 G.W. Bulluck Elementary School  
 Gaston College  
 Gaston STEM Leadership Academy  
 Gaston Virtual Academy  
 Gatesville Elementary School  
 Girls Scouts Carolina Peaks to Piedmont  
 Gouge Primary School  
 GR Edwards Elementary School  
 Granville Academy  
 Granville County Library Systems



Great Opportunities and Boundless Innovations for Girls (GO BIG)  
 Green Hope Elementary School  
 Greene County Intermediate School  
 Greene County Middle School  
 Greene County Schools  
 Greensboro Science Center  
 Grier Middle School  
 Grifton School  
 Grove Park Elementary School  
 Guilford Elementary School  
 Guilford Tech Community College  
 • Cline Observatory  
 Guy B. Phillips Middle School  
 Haliwa Saponi School  
 Hammocks Beach State Park  
 Hanes Magnet Middle School  
 Happy Roots  
 Harnett County Public Library  
 Harris Lake County Park  
 Havelock Elementary School  
 Haw River Elementary School  
 Hawk Eye Elementary School  
 Hayesville Elementary School  
 Haywood Community College  
 Haywood County Public Library  
 • Canton Branch  
 • Waynesville Branch  
 Hazelwood Elementary School  
 Hertford Grammar School  
 Highland Renaissance Academy  
 Hilburn Drive Academy  
 Hillcrest Elementary School  
 Historic Yates Mill County Park  
 Hodge Road Magnet Elementary School  
 Holly Shelter Middle School  
 Hominy Valley Elementary School  
 Hudson Elementary School  
 Imagination Station Science and History Museum  
 Imperial Centre for the Arts & Sciences/  
 Children's Museum & Science Center  
 Isothermal Community College  
 J.C. Sawyer Elementary School  
 Jacksonville Commons Middle School  
 James Love Elementary School  
 James Sprunt Community College  
 Jenkins Elementary School  
 Johnsonville Elementary School  
 Jones Elementary School  
 Jones Senior High School

Jonesville Elementary School  
 Kaleideum  
 Kathleen Clay Library  
 Kenansville Elementary School  
 KidSenses Children's Interactive Museum  
 Kitty Hawk Elementary School  
 La Grange Elementary School  
 Lake Wylie Elementary School  
 Lakeshore Middle School  
 Lakewood Montessori Middle School  
 Lee County Libraries  
 Lexington Parks & Recreation  
 Lexington Public Library  
 Lincoln Elementary School  
 Longview Elementary School  
 Macon County Schools  
 Madison Middle School  
 Mainspring Conservation Trust  
 Mallard Creek Elementary School  
 Mallard Creek STEM Academy  
 Manteo Elementary School  
 Marbles Kids Museum  
 Marion Elementary School  
 Mars Hill Elementary School  
 Mayland Community College  
 • Main Campus  
 • Mayland Earth to Sky Park  
 Mills Park Middle School  
 Mineral Springs Elementary School  
 Mitchell Elementary School  
 Mitchell Middle School  
 Mocksville Elementary School  
 Montclair Elementary School  
 Mount Airy Museum of Regional History  
 Mount Gilead Elementary School  
 Mount Jefferson State Natural Area  
 Mount Vernon Ruth Elementary School  
 Mountain Park Elementary School  
 Mountain View Elementary School (Hays)  
 Mountain View Elementary School (Jefferson)  
 Museum of Coastal Carolina and  
 Ingram Planetarium  
 Museum of Life and Science  
 Nash Community College  
 NC A&T  
 • 4-H Youth Development  
 • Aggie Academy  
 • Department of Animal Sciences  
 • NC Piedmont Triad K-12 STEM  
 Education Ecosystem  
 NC Association for Women in Science

## PARTNER ORGANIZATIONS, CONTINUED

NC Central University: FAB Lab

NC Cooperative Extension: Gates County Center

NC Department of Commerce

- I-26 West Welcome Center

NC Historic Sites: Historic Bath State Historic Site

NC Maritime Museum

NC Museum of Natural Sciences

- Downtown Museum
- Whiteville
- Contentnea Creek
- Prairie Ridge Ecostation

NC School of Science and Mathematics

- Durham Campus
- Morganton Campus

NC Science Trail

NC State Laboratory of Public Health

NC State Parks

- Beaverdam Lake State Recreation Area
- Carvers Creek State Park
- Dismal Swamp State Park
- Eno River State Park
- Fort Fisher State Recreation Area
- Fort Macon State Park
- Goose Creek State Park
- Gorges State Park
- Grandfather Mountain State Park
- Hanging Rock State Park
- Haw River State Park
- Jockey's Ridge State Park
- Jones Lake State Park
- Jordan Lake State Recreation Area
- Kerr Lake State Recreation Area
- Lake James State Park
- Lake Norman State Park
- Lumber River State Park
- Merchants Millpond State Park
- Pettigrew State Park
- Pilot Mountain State Park
- Salmon Creek State Natural Area
- Stone Mountain State Park
- Weymouth Woods Sandhills Nature Preserve
- William B. Umstead State Park

NC State University

- Catalyst
- College of Sciences
- Sustainability Office

Neuse Regional Libraries

- Greene County Public Library

Neuseway Nature Park: Ellis Planetarium

New Hope Elementary School

Niner University Elementary School

North Carolina Coastal Land Trust

North Carolina Geological Survey

North Carolina Science Olympiad

North Carolina Zoo

North Chatham Elementary School

North Kannapolis Elementary School

North Newton Elementary School

North Rowan High School

North Shelby School

Northeast Elementary School (Kinston)

Northeast Elementary School (Pinetown)

Northeastern Randolph Middle School

Northside Elementary School

Northwest Elementary School

Northwest Harnett Elementary School

Northwoods Elementary School

Oak Grove Elementary School

Oak Hill Elementary School

Oakboro Choice STEM School

Oakley Elementary School

Ocracoke Alive

Ocracoke School

Office of State Archaeology:

Queen Anne's Revenge Conservation Lab

Old Fort Elementary School

Old Richmond Elementary School

Oriental's History Museum

Oxendine Elementary School

Oxford Preparatory School

P.W. Moore Elementary School

Pamlico County Library

Park View Elementary School

Parkside Elementary School

Parkview Elementary School

Parkwood Elementary School

Paul J Ciener Botanical Garden

PBS North Carolina

Pembroke Elementary School

Pender County Library

Penderlea School

Perquimans Central School

Perquimans County Middle School

Person Early College for Innovation and Leadership

Peterson Elementary School

Pettigrew Regional Libraries

- Perquimans County Library
- Shepard-Pruden Memorial Library

Piedmont Environmental Alliance

Piedmont Environmental Center

Piedmont Wildlife Center

Pilot Mountain Middle School

Pinebrook Elementary School

Pinkston Street Elementary School

Pinnacle Classical Academy

Pisgah Astronomical Research Institute

Pitt Community College

Plain View Elementary School

Pleasant Gardens Elementary School

Pocosin Innovative Charter School

Princeville Elementary School

Rachel Freeman School

Randolph Community College

Reaching All Minds Academy

Red Oak Middle School - Nash County Public Schools

Reedy Creek Magnet Middle School

Reynolds Middle School

Richfield Elementary School

River Bend Middle School

River Park North

Robbinsville High School

Robeson Planetarium and Science Center

Rockfish Hoke Elementary School

Rocky Point Elementary School

Rocky River Elementary School

Rodgers Elementary School

Roland Grise Middle School

Rosman Elementary School

Rowan-Cabarrus Community College

Rowan Public Library

- East Branch
- Headquarters Branch
- South Branch
- West Branch

Rowland-Norment Elementary School

S.W. Snowden School

Salem Elementary School

Saluda Elementary School

Sampson County Library

Sandhill Regional Library System

- Hamlet Public Library
- Hampton B. Allen Library
- Hoke County Public Library
- Montgomery County Public Library
- Moore County Library
- Thomas H. Leath Memorial Library

Sandhills Community College

SanLee Middle School



Schiele Museum  
 School for Creative Studies  
 Science Alliance NC  
 Scotland County Memorial Library  
 Scotland Neck Elementary School  
 Leadership Academy  
 Scotts Elementary School  
 Scurlock Elementary School  
 Shepherd Elementary School  
 Siler City Elementary School  
 Silk Hope School  
 Silverdale Elementary School  
 Smokey Mountain Elementary School  
 Socrates Academy  
 South Brunswick Middle School  
 South Creek Middle School  
 South Davidson Middle School  
 South Davie Middle School  
 South Elementary School (Mebane)  
 South Elementary School (Roxboro)  
 South End Elementary School  
 South Greenville Elementary School  
 South Johnson Elementary School  
 South Smithfield Elementary School  
 South Stanly Middle School  
 South Toe Elementary School  
 Southern Middle School  
 South Piedmont Community College  
 • Lockhart-Taylor Center  
 • Old Charlotte Highway Campus  
 Southmont Elementary School  
 Southside Ashpole Elementary School  
 Southwest Elementary School Global Academy  
 Southwest Guilford Middle School  
 Southwestern Community College  
 Southwestern Randolph Middle School  
 Southwood Elementary School  
 Sparta Elementary School  
 Sparta School  
 Springfield Middle School  
 St. Stephen's Elementary School  
 St. Thomas More Catholic School  
 St. Timothy's School  
 Stanfield Elementary School  
 STEM West  
 Stemarga  
 Stokes School  
 Stoney Creek Elementary School  
 Stony Point Elementary School  
 Stories Creek Elementary School



Sturgeon City Environmental Education Center  
 Summerfield Elementary School  
 Summersill Elementary School  
 Surry Community College  
 Swain East Elementary School  
 Sylvan Heights Bird Park  
 T.S. Cooper Elementary School  
 Tabernacle Elementary School  
 Tar Heel School  
 The Catamount School  
 The Children's Museum of Wilmington  
 The Children's Playhouse  
 The Expedition School  
 The Land at Hawkins Loop  
 The Nest/Kidzu Children's Museum  
 The North Carolina Arboretum  
 Third Creek Middle School  
 Town of Cary: The Cary Theater  
 Town of Garner: Parks, Recreation and Cultural  
 Resources (White Deer Park Nature Center)  
 Town of Mooresville  
 Town of Nashville  
 Triad Math & Science Academy  
 Triangle Land Conservancy  
 Trinity Middle School  
 Troutman Middle School  
 Troy Elementary School  
 Turrentine Middle School  
 Tyrrell Elementary School  
 UNC Charlotte  
 • Center for STEM Education  
 • Combat Robot Club  
 • UNC Charlotte Observatory  
 UNC Chapel Hill  
 • Carolina Public Humanities  
 • Morehead Planetarium & Science Center  
 • NC Botanical Garden  
 • Physics and Astronomy  
 • SCOPE (Science Communication and  
 Outreach for Public Engagement)  
 UNC Greensboro  
 • RISE Network  
 • Three College Observatory  
 UNC Nutrition Research Institute  
 UNC Pembroke  
 UNC Wilmington: MarineQuest  
 Union County Library  
 • Lois Morgan Edwards Memorial Library  
 • Main Library  
 • Southwest Regional Library  
 • Union West Regional Library  
 Union Elementary School (Rowland)

Union Elementary School (Shelby)  
 Union Elementary School (Wingate)  
 UPI, Inc.  
 US EPA  
 Valley Springs Middle School  
 Vance-Granville Community College  
 Vanceboro Farm Life Elementary School  
 W.B. Wicker Elementary School  
 W.M. Irvin Elementary School  
 Wadesboro Primary School  
 Wagram Elementary School  
 Wake County  
 • Parks, Recreation and Open Spaces  
 • Waste & Recycling  
 Wake County Public Library  
 • Athens Drive Community Library  
 Wake Tech Community College  
 • Eastern Wake Campus  
 • Scott Northern Wake Campus  
 • Southern Wake Tech Campus  
 Wake Young Men's Leadership Academy  
 Walkertown Elementary School  
 Walnut Cove Elementary School  
 Warlick Academy  
 Warren County Memorial Library  
 Washington County Elementary School  
 Washington Street Elementary School  
 Waynesville Middle School  
 Weddington Middle School  
 West Greene Elementary School  
 West Hoke Elementary School  
 West Marion Elementary School  
 West McDowell Middle School  
 West Pine Elementary School  
 West Rockingham Elementary School  
 Western Carolina University  
 Western Piedmont Council of Governments  
 Westwood Elementary School  
 Wildwood Forest Elementary School  
 Wiley Elementary School  
 Wilkerson Nature Preserve  
 Wilkes Central High School  
 Wilson's Mills Elementary School  
 Winstead Avenue Elementary School  
 Winston Salem Preparatory Academy  
 Winston-Salem State University  
 Wittenburg Elementary School  
 Yadkin County Public Library  
 Yadkinville Elementary School  
 Zebulon Elementary School  
 Zebulon Middle School



THE NORTH CAROLINA SCIENCE FESTIVAL  
IS MADE POSSIBLE BY THE GENEROUS  
SUPPORT OF ITS SPONSORS.

PRESENTING SPONSOR



DIAMOND CHAMPION



PLATINUM SPONSORS



GOLD SPONSORS



BRONZE SPONSORS



PROUDLY PRODUCED BY



MOREHEAD  
PLANETARIUM+  
SCIENCE CENTER

VISIT [NCSCIFEST.ORG](https://ncscifest.org) TO LEARN MORE ABOUT HOW YOU CAN PARTICIPATE.