

FRONT

A UNIVERSE OF GALAXIES

## Milky Way Galaxy

### YOU ARE HERE

- We live about halfway out from the center of our galaxy
- The Sun is an average star. The Milky Way Galaxy, which is 100,000 light years across, contains about 200 billion other stars.
- The ratio of our galaxy's width to thickness is almost the same as this CD approximately 100:1

### Scale: 1 Million Light Years = 4 feet

Using this CD as our Galaxy, other galaxies would be at the following approximate distances from us:

<b>M31:</b> 10 ft	<b>M33:</b> 11 ft	<b>M81:</b> 16 yds
<b>NGC4565:</b> 40 yds	<b>M104:</b> 40 yds	<b>M66:</b> 47 yds
<b>M51:</b> 50 yds	<b>M87:</b> 73 yds	<b>3C273:</b> 2 Miles

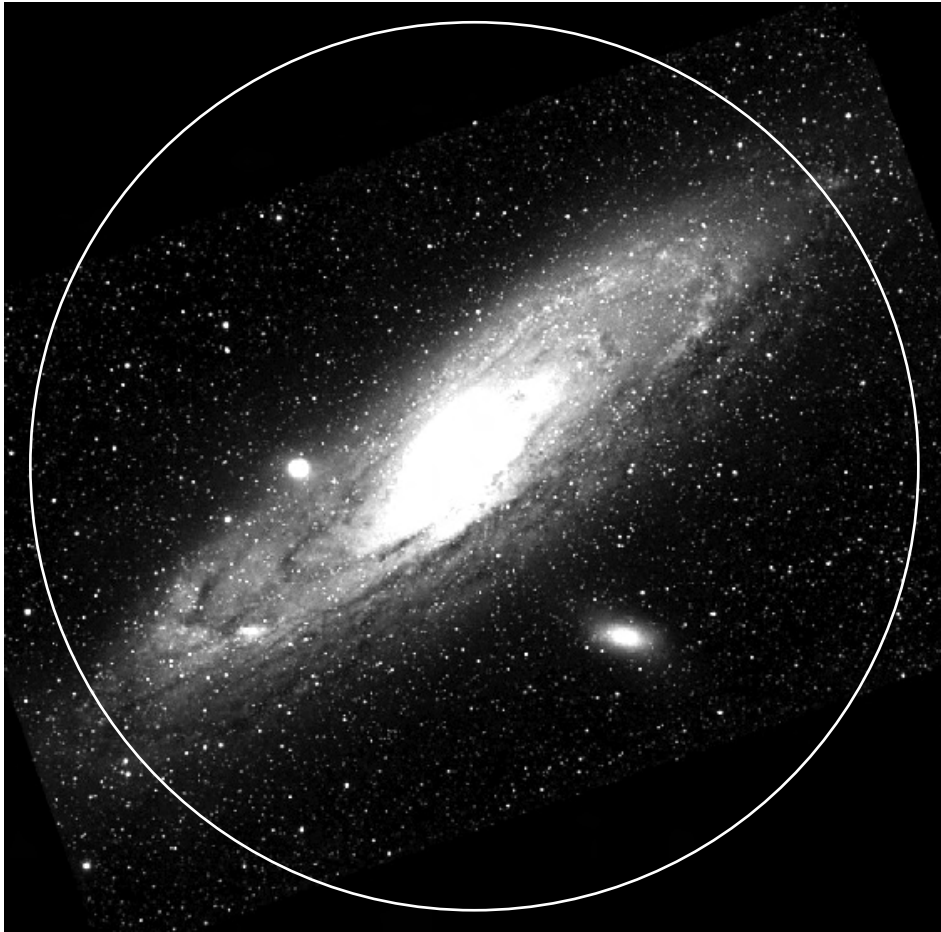
**Webb's First Deep Field**  
(representing the limit of observable universe): 10 Miles.

Image Credit: NASA  
© 2004 Astronomical Society of the Pacific  
Copies for educational purposes are permitted.  
www.astrosociety.org

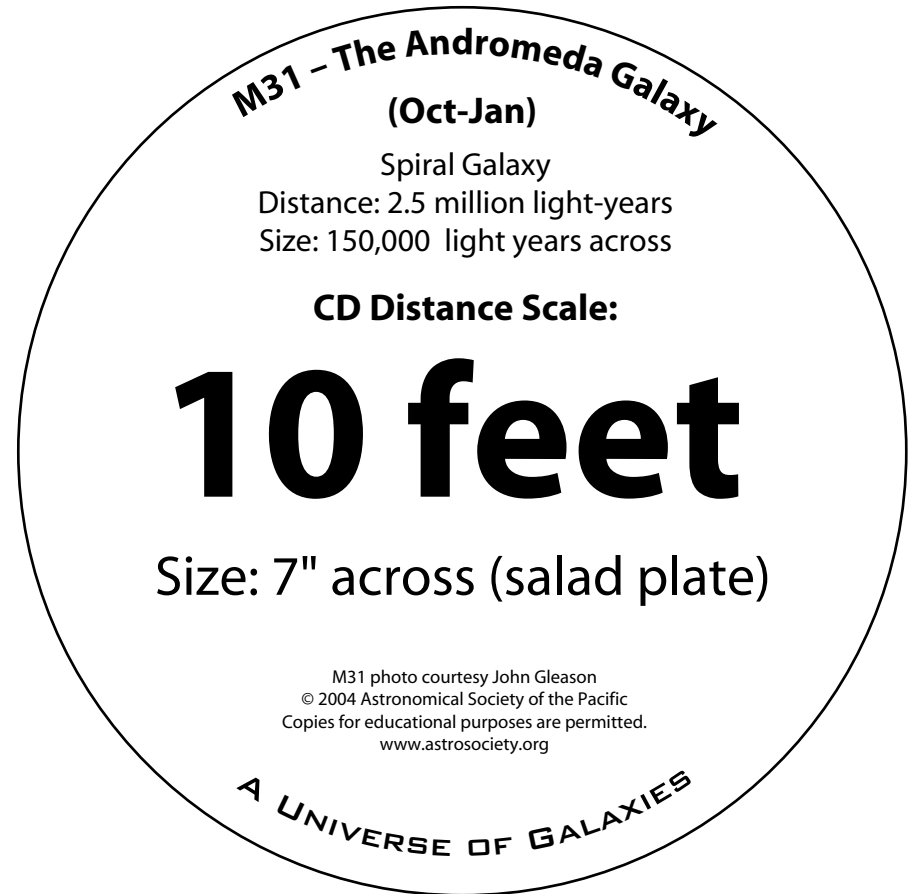
BACK

### Instructions:

Cut out each circle and glue the "FRONT" to the label side of a used CD. Glue the "BACK" to the other side of the CD.



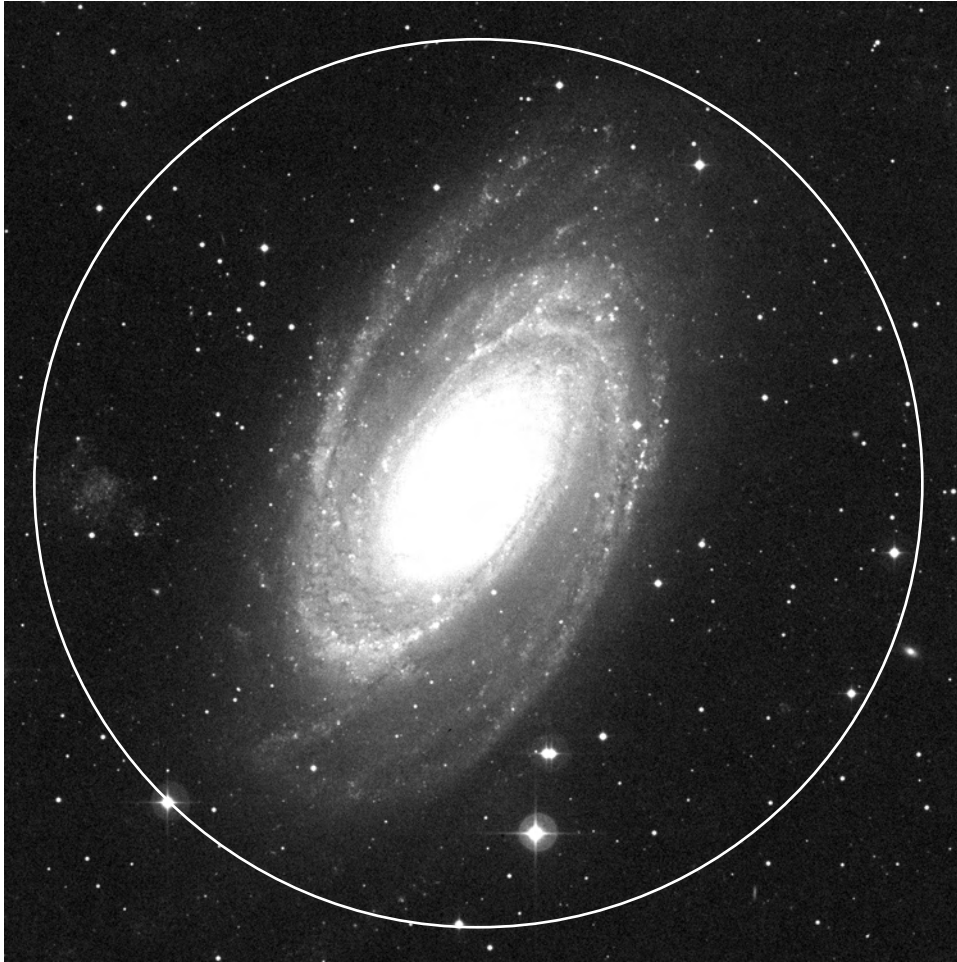
FRONT



BACK

Instructions:

Cut out each circle and glue the "FRONT" to the label side of a used CD. Glue the "BACK" to the other side of the CD.



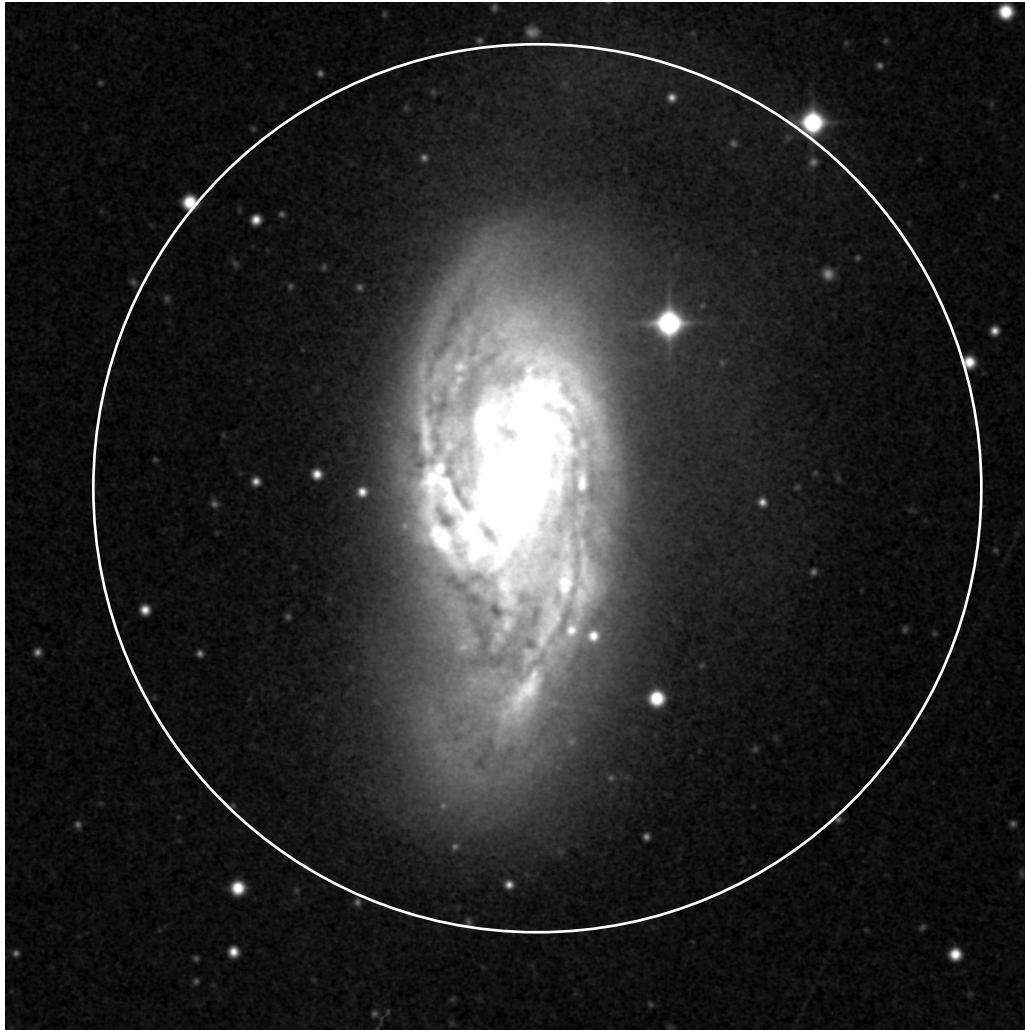
FRONT



BACK

**Instructions:**

Cut out each circle and glue the "FRONT" to the label side of a used CD. Glue the "BACK" to the other side of the CD.



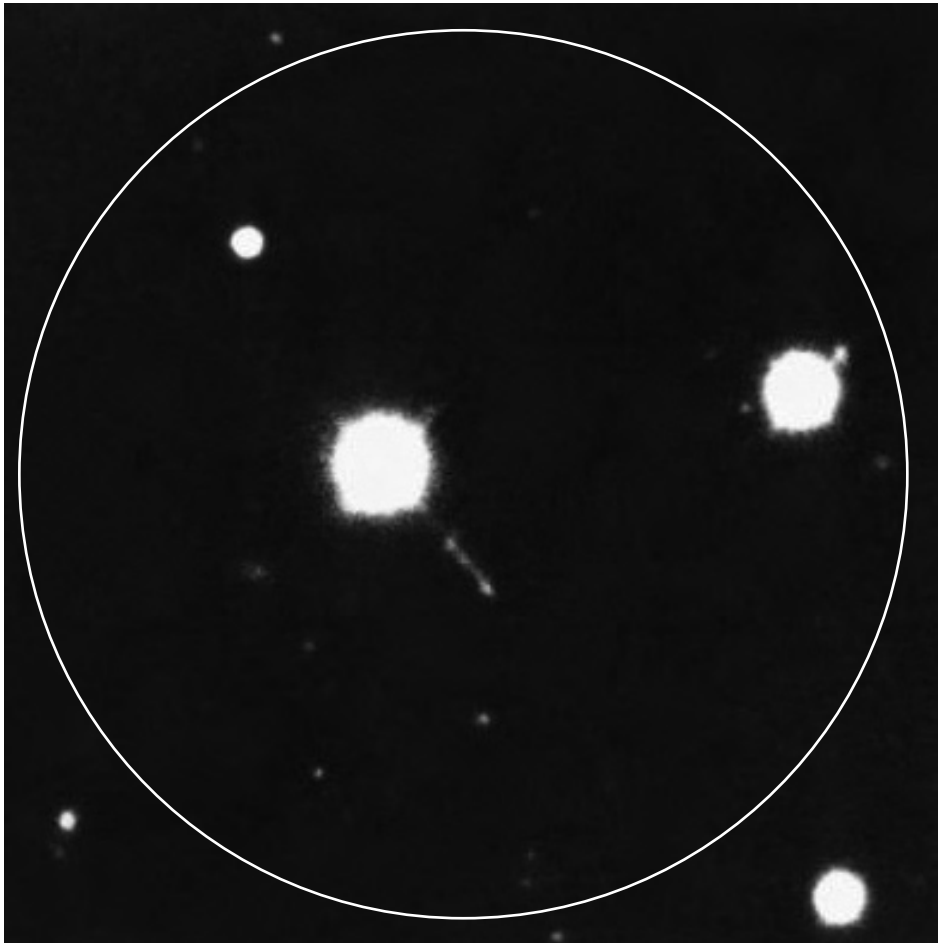
FRONT



BACK

**Instructions:**

Cut out each circle and glue the "FRONT" to the label side of a used CD. Glue the "BACK" to the other side of the CD.



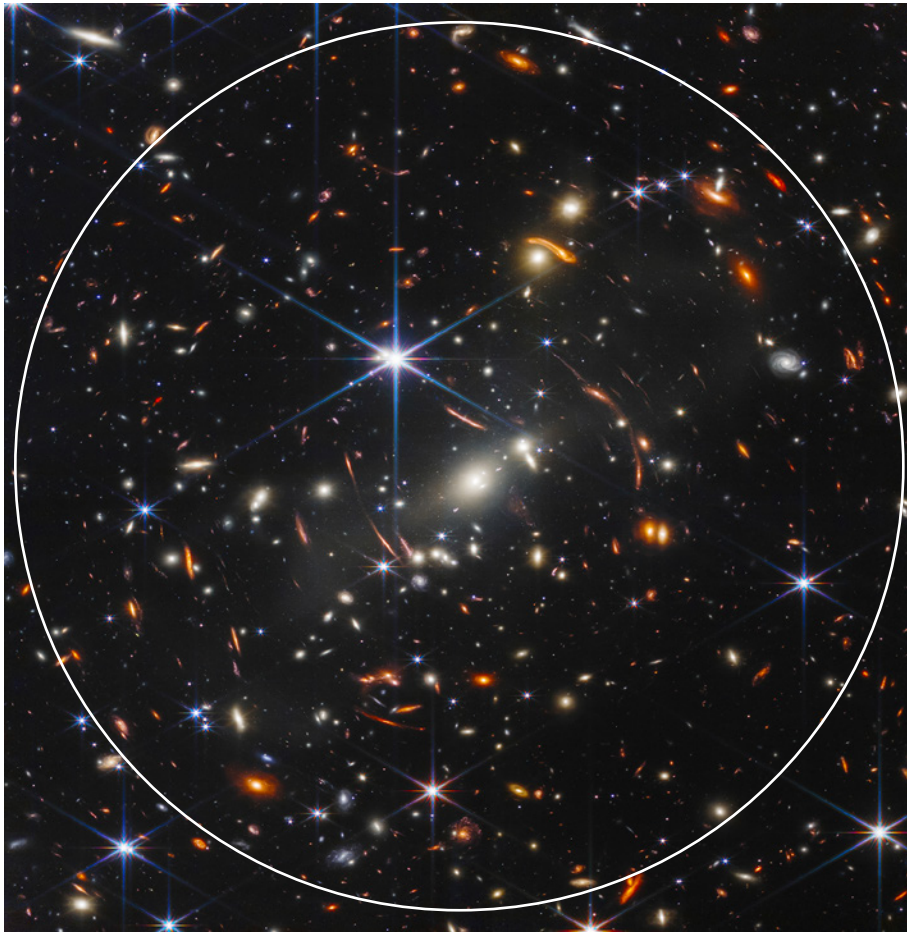
FRONT



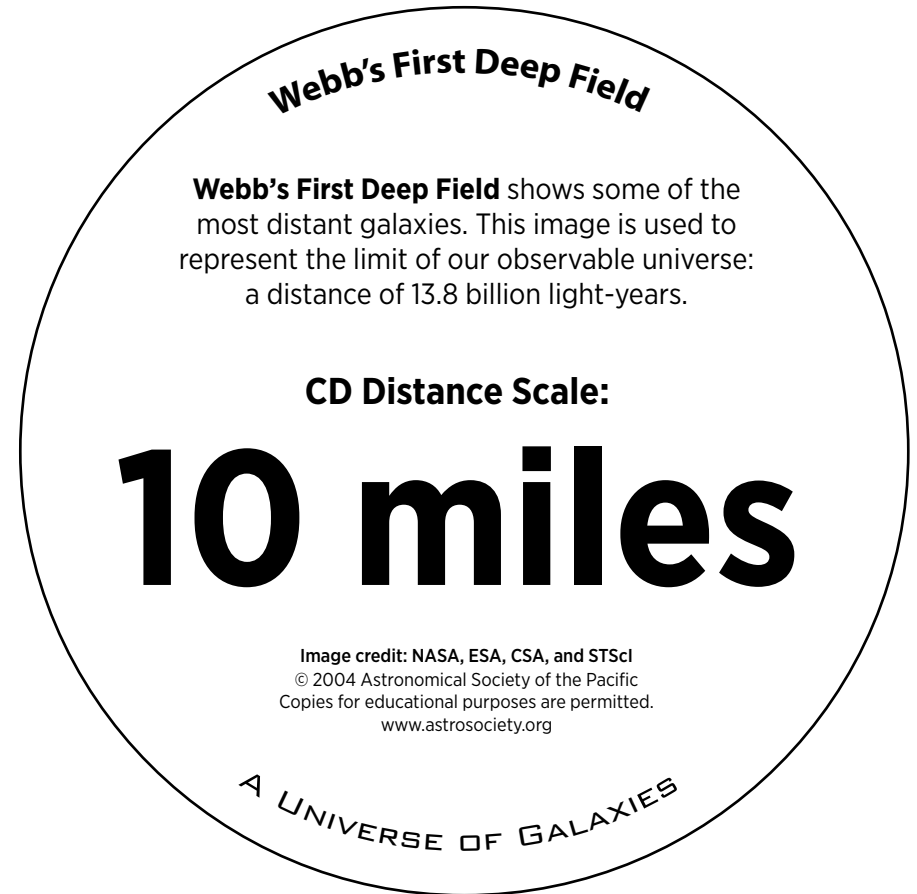
BACK

**Instructions:**

Cut out each circle and glue the "FRONT" to the label side of a used CD. Glue the "BACK" to the other side of the CD.



FRONT



BACK

**Instructions:**

Cut out each circle and glue the "FRONT" to the label side of a used CD. Glue the "BACK" to the other side of the CD.